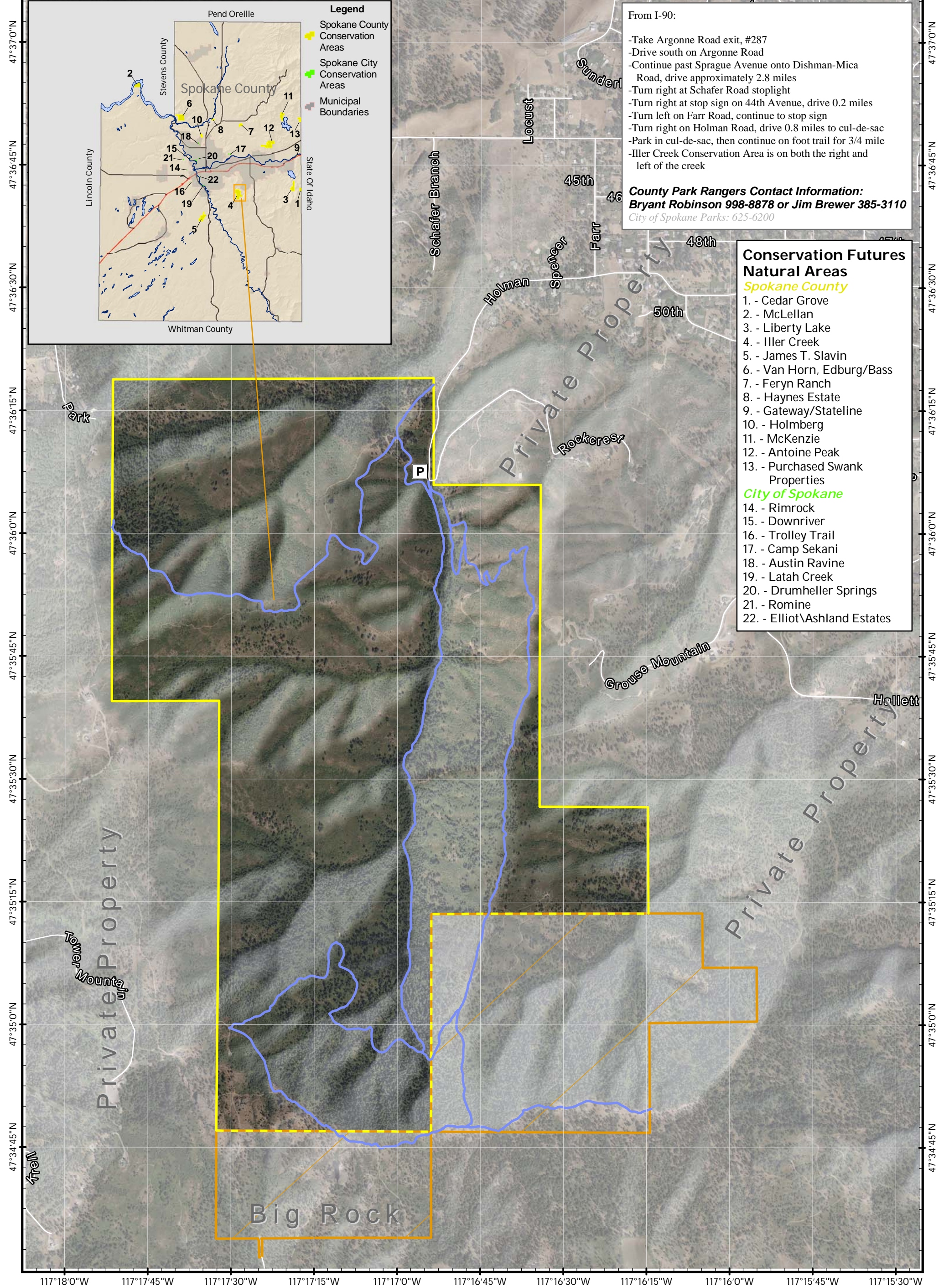



117°18'0"W 117°17'45"W 117°17'30"W 117°17'15"W 117°17'0"W 117°16'45"W 117°16'30"W 117°16'15"W 117°16'0"W 117°15'45"W 117°15'30"W





Iller Creek Conservation Area

Owned and Managed by Spokane County

2008 Ortho Imagery:
Copyright: Avista Utilities.

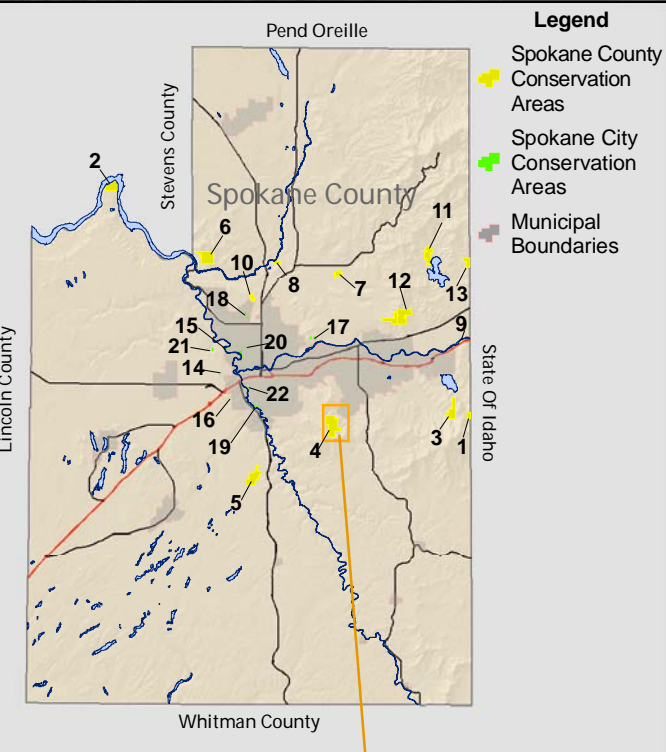
Spokane County Geographic Information Systems
Map Produced: October, 2009

0 0.05 0.1 0.2 0.3 0.4
Miles

Know Your Conservation Area Boundaries

<ul style="list-style-type: none"> Boundary Adjoins Private Property Boundary Adjoins Publicly Accessible Land 	<ul style="list-style-type: none"> Dishman Hills Natural Area Association Recreational Trail
--	--

Note: This is a GIS map showing base layers rendered for "best fit" with digital orthophotography. This is not a survey and users are reminded that legal documents and site inspections are necessary to establish exact boundaries on the ground. While every attempt is made to assure the accuracy of this information, no warranty accompanies this map.



Legend

- Spokane County Conservation Areas
- Spokane City Conservation Areas
- Municipal Boundaries

From I-90:

- Take Argonne Road exit, #287
- Drive south on Argonne Road
- Continue past Sprague Avenue onto Dishman-Mica Road, drive approximately 2.8 miles
- Turn right at Schafer Road stoplight
- Turn right at stop sign on 44th Avenue, drive 0.2 miles
- Turn left on Farr Road, continue to stop sign
- Turn right on Holman Road, drive 0.8 miles to cul-de-sac
- Park in cul-de-sac, then continue on foot trail for 3/4 mile
- Iller Creek Conservation Area is on both the right and left of the creek

County Park Rangers Contact Information:
Bryant Robinson 998-8878 or Jim Brewer 385-3110
 City of Spokane Parks: 625-6200

- Conservation Futures Natural Areas**
Spokane County
1. - Cedar Grove
 2. - McLellan
 3. - Liberty Lake
 4. - Iller Creek
 5. - James T. Slavin
 6. - Van Horn, Edburg/Bass
 7. - Feryn Ranch
 8. - Haynes Estate
 9. - Gateway/Stateline
 10. - Holmberg
 11. - McKenzie
 12. - Antoine Peak
 13. - Purchased Swank Properties
- City of Spokane**
14. - Rimrock
 15. - Downriver
 16. - Trolley Trail
 17. - Camp Sekani
 18. - Austin Ravine
 19. - Latah Creek
 20. - Drumheller Springs
 21. - Romine
 22. - Elliot\Ashland Estates